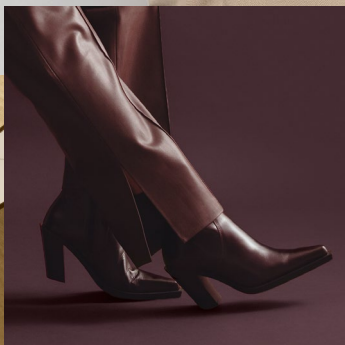


THREAD
GUIDE

Gütermann



Index

Mara	3
Maraflex	4
Tera	5
Skala	6
Tera fine	6
Filan fine	7
Piuma	8
Princess	8
Gütermann E	9
Perma Core® Ultimate	10
Perma Core®	10
Elastic	11
Anecot® Plus	12
Lyocell	12
Mara rPET	13
Tera rPET	13
Zwibond	14
Amifil	14
Anebraid®	15
Calora UV	16
Solbond	16
Sunstop®	17
Anesafe®	18
Gütermann K	18
Gütermann K AR	19
Gütermann L	19
Acero	20
Aneguard using Kevlar®	20
Antistatik	21
Poly/Poly SF	22
Polypropylen SF	22
Polyacryl	22
PTFE	23
WS	23

100% Polyester

MICRO CORE TECHNOLOGY®	
Mara	3
CORE SPUN	
Perma Core® Ultimate	10
Perma Core®	10
Poly/Poly SF	22
TEXTURED MULTIFILAMENT	
Gütermann E	9
Piuma	8
CONTINUOUS FILAMENT	
Tera	5
Tera fine	6
Filan fine	7
Calora UV	16
Anebraid®	15
CONTINUOUS FILAMENT, OUTERBONDED	
Solbond	16
Sunstop®	17
Skala	6

100% Polyester, recycled

MICRO CORE TECHNOLOGY®	
Mara rPET	13
CONTINUOUS FILAMENT	
Tera rPET	13

100% Polybutylene-terephthalate

MICRO CORE TECHNOLOGY®	
Maraflex	4

100% Cotton

SPUN	
Anecot® Plus	12

100% Polyamide

CORE SPUN	
Antistatik	21
TEXTURED MICROFILAMENT	
Princess	8
CONTINUOUS FILAMENT	
Amifil	14
CONTINUOUS FILAMENT, INNERBONDED	
Zwibond	14

Aramide / 100% Nomex®

SPUN	
Anesafe®	18
Gütermann K	18
Gütermann K AR	19
Aneguard using Kevlar®	20
CONTINUOUS FILAMENT	
Gütermann L	19

Specials

Elastic	11
Lyocell	12
Acero	20
Antistatik	21
Polypropylen SF	22
Polyacryl	22
PTFE	23
WS	23



Mara

for most beautiful seams

Material / Construction

100 % polyester / Micro Core Technology®

Recommended application

Closing, decorative, overlock, safety & coverstitch seams, straight button holes, eyelet button holes with/without gimp

Product benefits

- + Unique MCT® construction
- + Brilliant colours with a silky appearance
- + Fine thread cross-section for particularly smooth seams
- + Excellent performance on automatic sewing machines
- + No fibre fly

No./Tkt.	dtex	Needle	Make-up	Code
220	130(1)	NM 60 - 65 / 8 - 9	5,000 m	772607
150	200(2)	NM 65 - 70 / 9 - 10	1,000 m	713953
			5,000 m	713961
120	250(2)	NM 70 - 80 / 10 - 12	1,000 m	700207
			5,000 m	700185
100	300(2)	NM 70 - 90 / 10 - 14	1,000 m	707694
			5,000 m	707708
80	400(2)	NM 80 - 100 / 12 - 16	800 m	700428
			5,000 m	700410
70	400(3)	NM 90 - 100 / 14 - 16	700 m	702170
			7,000 m	702153
50	600(3)	NM 90 - 110 / 14 - 18	500 m	702277
			5,000 m	702250
30	1000(3)	NM 110 - 130 / 18 - 21	300 m	702404
			3,000 m	702358
15	2000(3)	NM 140 - 160 / 22 - 23	150 m	720623
			1,500 m	720429
11	2600(4)	NM 160 - 180 / 23 - 24	110 m	702510
			1,130 m	702501



Available with a water-repellent finish upon request.



Maraflex

for highly elastic seams

Material / Construction 100% polybutylenterephthalat / Micro Core Technology®

Recommended application Closing & decorative seams

- Product benefits**
- + Unique MCT® construction
 - + Exceptionally elastic
 - + Brilliant colours with a silky appearance
 - + Increases the elasticity of double stitch seams
 - + No fibre fly



No./Tkt.	dtex	Needle	Make-up	Code
120	380(2)	NM 70 - 80 / 10 - 12	1,500 m	716936
80	550(3)	NM 90 - 100 / 14 - 16	2,000 m	716103
50	880(2)	NM 90 - 110 / 14 - 18	3,000 m	717142



Tera

for brilliant seams

Material / Construction 100 % polyester / Continuous filament

Recommended application Closing & decorative seams

- Product benefits**
- + Durable, robust seams
 - + Very high tear resistance
 - + Very even
 - + Shiny appearance
 - + High rub resistance

No./Tkt.	dtex	Needle	Make-up	Code
80	350(3)	NM 70 - 90 / 10 - 14	2,400 m	704261
			8,000 m	704270
60	500(3)	NM 90 - 100 / 14 - 16	1,800 m	704350
			6,000 m	704369
40	750(3)	NM 90 - 110 / 14 - 18	1,200 m	704440
			4,000 m	704458
30	1000(3)	NM 110 - 130 / 18 - 21	900 m	704601
			3,000 m	704610
20	1500(3)	NM 120 - 140 / 19 - 22	600 m	704687
			2,000 m	704695
15	2000(3)	NM 140 - 160 / 22 - 23	400 m	784290
10	2900(3)	NM 160 - 230 / 23 - 26	300 m	704814
			1,000 m	704822
8	3750(3)	NM 200 - 250 / 25 - 27	800 m	704920
5	6000(3)	NM 250 - 300 / 27 - 29	500 m	704857



Available with a water-repellent finish upon request.



Skala

for almost invisible seams

Material / Construction 100 % polyester / Continuous filament, bonded

Recommended application Overlock, safety, blindstitched seams

- Product benefits**
- + Optimum colour matching thanks to semi-transparent appearance
 - + Fine thread cross-section for particularly smooth seams
 - + No visible seam marks after ironing
 - + Use of particularly fine needle sizes possible
 - + Very even

No./Tkt.	dtex	Needle	Make-up	Code
360	80(1)	NM 55 - 60 / 7 - 8	5,000 m	749591
			20,000 m	704997
240	120(1)	NM 60 - 65 / 8 - 9	5,000 m	720763
			10,000 m	715174
200	150(1)	NM 60 - 65 / 8 - 9	10,000 m	705020



Tera fine

for almost invisible seams

Material / Construction 100 % polyester / Continuous filament

Recommended application Overlock, safety, blindstitched, trimming & padded seams

- Product benefits**
- + Semi-transparent look for discreet seams with multicoloured fabrics
 - + Fine thread cross-section for particularly smooth seams
 - + Use of particularly fine needle sizes possible
 - + No visible seam marks after ironing
 - + Smooth thread surface

No./Tkt.	dtex	Needle	Make-up	Code
180	160(2)	NM 65 - 70 / 9 - 10	5,000 m	704172
			10,000 m	704180
			20,000 m	704199





Filan fine

for almost invisible seams

Material / Construction 100 % polyester / Continuous filament

Recommended application Overlock, blindstitched, trimming & padded seams

Product benefits

- + Semi-transparent look for discreet seams with multicoloured fabrics
- + Fine thread cross-section for particularly smooth seams
- + Use of particularly fine needle sizes possible
- + No visible seam marks after ironing
- + Smooth thread surface



No./Tkt.	dtex	Needle	Make-up	Code
300	100(2)	NM 55 - 60 / 7 - 8	5,000 m	705672
			10,000 m	705674



Piuma

for soft seams

Material / Construction 100 % polyester / Textured microfibrres

Recommended application Overlock, safety & coverstitch seams

- Product benefits**
- + Soft seams
 - + Very soft and dense overedge coverage
 - + High texturized character
 - + Needle and looper thread suitability
 - + Optimum engineered extension



No./Tkt.	dtex	Needle	Make-up	Code
160	190(1)	NM 65 - 70 / 9 - 10	5,000 m	711616
140	220(1)	NM 65 - 70 / 9 - 10	5,000 m	711004
			10,000 m	788910



Princess

for soft seams

Material / Construction 100 % polyamide 6.6
Textured microfibrres (Princess 80 and 160)
Continuous filament (Princess 120)

Recommended application Overlock, safety & coverstitch seams

- Product benefits**
- + Soft seams
 - + High texturized character
 - + Suitable for garment dyeing
 - + Optimum engineered extension
 - + Use of particularly fine needle sizes possible



No./Tkt.	dtex	Needle	Make-up	Code
160	180(1)	NM 65 - 70 / 9 - 10	5,000 m	713368
			10,000 m	713210
120	250(3)	NM 70 - 80 / 10 - 12	5,000 m	713244
80	380(1)	NM 70 - 90 / 10 - 14	5,000 m	713422



Gütermann E

for overlock seams

Material / Construction 100 % polyester / Textured multifilament

Recommended application Overlock, safety & coverstitch seams

Product benefits

- + Soft seams
- + High texturized character
- + Very soft and dense overedge coverage
- + Needle and looper thread suitability
- + Optimum engineered extension

	No./Tkt.	dtex	Needle	Make-up	Code
Gütermann E 121	240	120(1)	NM 60 - 65 / 8 - 9	10,000 m	715298
				30,000 m	715280
Gütermann E 151	160	190(1)	NM 65 - 70 / 9 - 10	10,000 m	715328
				24,000 m	715310
Gütermann E 382	80	380(2)	NM 70 - 90 / 10 - 14	6,000 m	730815
				12,000 m	715301





Perma Core[®] Ultimate

for particularly fine seams

- Material / Construction** 100 % polyester / Corespun, compact spun
- Recommended application** Closing, decorative, overlock & safety seams
- Product benefits**
- + Fine thread cross-section for particularly smooth seams
 - + Pucker-free seams
 - + Excellent performance on automatic sewing machines
 - + Optimum engineered extension
 - + Very even



No./Tkt.	dtex	Needle	Make-up	Code
180	160(2)	NM 60 - 65 / 8 - 9	1,000 m	709010
			5,000 m	709011



Perma Core[®]

for highly stressed seams

- Material / Construction** 100 % polyester / Corespun
- Recommended application** Closing, decorative, overlock, safety & coverstitch seams, straight button holes, eyelet button holes with/without gimp
- Product benefits**
- + Matt finish
 - + Durable, robust seams
 - + High tear resistance
 - + Excellent performance on automatic sewing machines
 - + High rub resistance



No./Tkt.	dtex	Needle	Make-up	Code
120	240(2)	NM 70 - 80 / 10 - 12	1,000 m	708960
			5,000 m	708961
75	400(2)	NM 80 - 100 / 14 - 18	5,000 m	708941
50	600(2)	NM 90 - 110 / 12 - 16	5,000 m	708931
36	800(2)	NM 100 - 120 / 16 - 19	5,000 m	708921
27	1050(2)	NM 110 - 130 / 18 - 21	5,000 m	708911



Elastic

for smocking seams

Material / Construction 64 % polyester / 36 % polyurethane / Wrapped yarn

Recommended application Special sewing machines with cover thread or additional thread

Product benefits

- + Special thread with exceptional elasticity
- + for smocking effects
- + Uniform wrapping of the elastic core thread

No./Tkt.	dtex	Needle	Make-up	Code
25	1300	NM 100 - 110 / 16 - 18	1,000 m	724017
15	1900	NM 100 - 130 / 16 - 21	1,000 m	784419



Anecot® Plus

for optimal dyeability in garment dyeing

- Material / Construction** 100 % cotton / Spun, long fibre
- Recommended application** Closing, decorative & overlock seams
- Product benefits**
- + Suitable for garment dyeing
 - + Optimum/Excellent dyeability
 - + Combed, gassed and mercerised cotton
 - + Soft seams
 - + Excellent performance on automatic sewing machines



	No./Tkt.	dtex	Needle	Make-up	Code
Anecot® Plus 50/3	90	350(3)	NM 80 - 90 / 12 - 14	10,000 m	705804
Anecot® Plus 30/3	50	600(3)	NM 90 - 110 / 14 - 18	5,000 m	705803
Anecot® Plus 24/3	40	750(3)	NM 110 - 120 / 18 - 19	5,000 m	705802
Anecot® Plus 16/3	25	1100(3)	NM 120 - 140 / 19 - 22	3,000 m	705801
Anecot® Plus 12/4	18	1500(4)	NM 140 - 160 / 22 - 23	2,000 m	705800



Lyocell

for garment dyeing

- Material / Construction** 100 % Tencel® / Spun
- Recommended application** Closing, decorative & overlock seams
- Product benefits**
- + Suitable for garment dyeing
 - + Soft seams
 - + Biodegradable
 - + Optimum engineered extension

No./Tkt.	dtex	Needle	Make-up	Code
120	250(2)	NM 70 - 80 / 10 - 12	5,000 m	748900
70	400(3)	NM 90 - 100 / 14 - 16	5,000 m	748897



Mara rPET

for 100 % recycled seams

- Material / Construction** 100 % polyester, recycled / Micro Core Technology®
- Recommended application** Closing, decorative, overlock, safety & coverstitch seams, straight button holes, eyelet button holes with/without gimp
- Product benefits**
- + Unique MCT® construction
 - + Brilliant colours with a silky appearance
 - + Fine thread cross-section for particularly smooth seams
 - + Excellent performance on automatic sewing machines
 - + No fibre fly

No./Tkt.	dtex	Needle	Make-up	Code
120	250(2)	NM 70 - 80 / 10 - 12	1,000 m	708467
			5,000 m	708468
70	400(3)	NM 90 - 110 / 14 - 16	700 m	708473
			7,000 m	708474
50	600(3)	NM 90 - 110 / 14 - 18	500 m	708470
30	1000(3)	NM 110 - 130 / 18 - 21	300 m	708437
15	2000(3)	NM 140 - 160 / 22 - 23	150 m	708479
11	2650(4)	NM 160 - 180 / 23 - 24	110 m	708518



Tera rPET

for 100 % recycled seams

- Material / Construction** 100 % polyester, recycled / Continuous filament
- Recommended application** Closing & decorative seams
- Product benefits**
- + Durable, robust seams
 - + Very high tear resistance
 - + Very even
 - + Shiny appearance
 - + High rub resistance

No./Tkt.	dtex	Needle	Make-up	Code
80	350(3)	NM 70 - 90 / 10 - 14	2,400 m	704262
			8,000 m	704271
60	500(3)	NM 90 - 100 / 14 - 16	1,800 m	704355
			6,000 m	704365
40	750(3)	NM 90 - 110 / 14 - 18	1,200 m	704443
			4,000 m	704459
30	1000(3)	NM 110 - 130 / 18 - 21	900 m	704603
			3,000 m	704611
20	1500(3)	NM 120 - 140 / 19 - 22	600 m	704686
			2,000 m	704697
15	2000(3)	NM 140 - 160 / 22 - 23	400 m	784291
			1,500 m	784294





Zwibond

for particularly robust seams

Material / Construction 100 % polyamide 6.6 / Continuous filament, innerbonded

Recommended application Closing & decorative seams

Product benefits

- + No untwisting thanks to inner bonding
- + Reliability on automatic sewing machines
- + Very high tear resistance
- + Optimum engineered extension
- + Suitable for 2-needle applications

No./Tkt.	dtex	Needle	Make-up	Code
60	500(3)	NM 90 - 100 / 14 - 16	6,000 m	713074
40	750(3)	NM 90 - 110 / 14 - 18	4,000 m	713066
30	1000(3)	NM 110 - 130 / 18 - 21	3,000 m	713058
20	1500(3)	NM 120 - 140 / 19 - 22	2,000 m	713040
13	2300(3)	NM 140 - 180 / 22 - 24	1,300 m	713031



Amifil

for particularly robust seams

Material / Construction 100 % polyamide 6.6 / Continuous filament

Recommended application Closing & decorative seams

Product benefits

- + Very high tear resistance
- + Reliability on automatic sewing machines
- + Smooth thread surface
- + Optimum engineered extension
- + Durable, robust seams

No./Tkt.	dtex	Needle	Make-up	Code
60	450(3)	NM 90 - 100 / 14 - 16	6,000 m	709131
40	700(3)	NM 90 - 110 / 14 - 18	4,000 m	709121
30	900(3)	NM 110 - 130 / 18 - 21	6,000 m	709111
20	1350(3)	NM 120 - 140 / 19 - 22	2,000 m	709101
13	2100(3)	NM 140 - 180 / 22 - 24	1,300 m	709090
10	2800(3)	NM 160 - 230 / 23 - 26	1,000 m	709080



Anebraid®

for striking decorative seams

Material / Construction 100 % polyester / Continuous filament, braided

Recommended application Closing & decorative seams, special sewing machines with cover thread or additional thread

Product benefits

- + Can be used as needle thread and gimp threads
- + Very high tear resistance
- + High rub resistance
- + Brilliant appearance



Ø	dtex	Needle	Make-up	Code
1,0	4900	NM 200 - 230 / 25 - 26	800 m	709032



Calora UV

for UV-resistant seams

Material / Construction 100 % polyester / Continuous filament

Recommended application Closing & decorative seams

Product benefits

- + High tear resistance
- + Optimal UV resistance
- + Optimal seawater resistance
- + Very high colour fastness
- + Good weather resistance



No./Tkt.	dtex	Needle	Make-up	Code
40	750(3)	NM 90 - 110 / 14 - 18	4,000 m	583774
30	1000(3)	NM 110 - 130 / 18 - 21	3,000 m	583766
20	1500(3)	NM 120 - 140 / 19 - 22	2,000 m	583758
15	2000(3)	NM 140 - 160 / 22 - 23	1,500 m	583740



Solbond

for UV-resistant seams

Material / Construction 100 % polyester / Continuous filament, outerbonded

Recommended application Closing & decorative seams

Product benefits

- + High tear resistance
- + Very high rub resistance
- + Optimal UV resistance
- + Optimal seawater resistance
- + Very high colour fastness

No./Tkt.	dtex	Needle	Make-up	Code
40	750(3)	NM 90 - 110 / 14 - 18	3,000 m	583588
30	1000(3)	NM 110 - 130 / 18 - 21	2,500 m	583570
20	1500(3)	NM 120 - 160 / 19 - 23	1,500 m	583561
10	2500(3)	NM 160 - 230 / 23 - 26	1,000 m	583553



Sunstop®

for UV-resistant seams

Material / Construction 100 % polyester / Continuous filament, outerbonded

Recommended application Closing & decorative seams

Product benefits

- + High tear resistance
- + Very high rub resistance
- + Optimal UV resistance
- + Optimal seawater resistance
- + Very high colour fastness

No./Tkt.	dtex	Needle	Make-up	Code
40	700(3)	NM 90 - 110 / 14 - 18	3,270 yds = 2,990 m	709170
30	900(3)	NM 110 - 130 / 18 - 21	2,100 yds = 1,920 m	709171
			4,200 yds = 3,840 m	709175
20	1350(3)	NM 120 - 140 / 19 - 22	1,350 yds = 1,234 m	709172
			2,700 yds = 2,468 m	709176
15	2100(3)	NM 140 - 160 / 22 - 23	1,900 yds = 1,737 m	709173



Anesafe®

for heat resistant seams

- Material / Construction** 100 % meta-aramide Nomex® / Spun, short fibre
- Recommended application** Closing, decorative & safety seams
- Product benefits**
- + Short-term high-temperature-resistant at approx. 360°C
 - + Flame retardant and self-extinguishing
 - + Non-melting
 - + Good resistance to chemicals
 - + Very high tear resistance

	No./Tkt.	dtex	Needle	Make-up	Code
Anesafe® 120	120	270(2)	NM 80 - 90 / 12 - 14	5,000 m	705703
Anesafe® 75	75	400(3)	NM 90 - 100 / 14 - 16	700 m	705714
				5,000 m	705702
Anesafe® 50	50	600(3)	NM 100 - 110 / 16 - 18	4,000 m	705705
Anesafe® 36	36	800(3)	NM 110 - 130 / 18 - 21	3,000 m	705704



Gütermann K

for heat resistant seams

- Material / Construction** 100 % meta-aramide Nomex® / Spun, long fibre
- Recommended application** Closing, decorative & safety seams
- Product benefits**
- + Short-term high-temperature-resistant at approx. 360°C
 - + Flame retardant and self-extinguishing
 - + Non-melting
 - + Good resistance to chemicals
 - + Very high tear resistance



	No./Tkt.	dtex	Needle	Make-up	Code
Gütermann K 403	70	400(3)	NM 90 - 100 / 14 - 16	700 m	701319
				5,000 m	701299
Gütermann K 753	40	750(3)	NM 100 - 110 / 16 - 18	3,000 m	701342





Gütermann K AR

for heat resistant seams

- Material / construction** 100 % meta-aramide / Spun, Short fibre
- Recommended application** Closing, decorative & safety seams
- Product benefits**
- + Short-term high-temperature-resistant at approx. 360°C
 - + Flame retardant and self-extinguishing
 - + Non-melting
 - + Good resistance to chemicals
 - + Very high tear resistance



	No./Tkt.	dtex	Needle	Make-up	Code
Gütermann K AR 403	70	400(3)	NM 90 - 100 / 14 - 16	5,000 m	771685
Gütermann K AR 753	40	750(3)	NM 100 - 110 / 16 - 18	3,000 m	777918



Gütermann L

for heat resistant seams

- Material / Construction** 100 % meta-aramide Nomex® /
Continuous filament (L753, L1503) /
Continuous filament, outerbonded (L1501)
- Recommended application** Closing, decorative & safety seams
- Product benefits**
- + Short-term high-temperature-resistant at approx. 360°C and permanently at 260°C
 - + Flame retardant and self-extinguishing
 - + Very high tear resistance
 - + Good resistance to chemicals



	No./Tkt.	dtex	Needle	Make-up	Code
Gütermann L 753	40	750(3)	NM 90 - 110 / 14 - 18	400 m	701505
				1,200 m	701491
				4,000 m	709328
Gütermann L 1503	20	1500(3)	NM 120 - 140 / 19 - 22	600 m	701548
				2,000 m	724475
Gütermann L 1501	20	1500(1)	NM 120 - 140 / 19 - 22	600 m	703443
				2,000 m	703427



Acero

for extremely heat-resistant seams

- Material / Construction** Stainless steel, para-aramide (Kevlar®) / Wrapped yarn
- Recommended application** Closing seams
- Product benefits**
- + Very high heat resistance up to approx. 700°C under mechanical load and up to approx. 1,000°C without mechanical load
 - + Steel wire core with Kevlar wrapping
 - + Very high tear resistance
 - + Good resistance to chemicals

No./Tkt.	dtex	Needle	Make-up	Code
30	1040	NM 100 - 140 / 16 - 22	2,500 m	733488
15	2100	NM 130 - 150 / 21 - 23	2,500 m	733484



Aneguard using Kevlar®

for highly heat-resistant seams

- Material / Construction** 100% para-aramide Kevlar® / Spun
- Recommended application** Closing, decorative & safety seams
- Product benefits**
- + Good high-temperature resistance, as can withstand short term temperatures of up to approx. 420°C
 - + Flame retardant and self-extinguishing
 - + Non-melting
 - + Good resistance to chemicals
 - + Very high tear resistance

No./Tkt.	dtex	Needle	Make-up	Code
50	600(3)	NM 110 - 130 / 18 - 21	6,000 yds = 5,486 m	705922
36	800(4)	NM 120 - 140 / 19 - 22	6,000 yds = 5,486 m	705921
27	1050(4)	NM 130 - 140 / 21 - 22	3,000 yds = 2,743 m	705920



Antistatik

for antistatic seams

Material / Construction Steel, polyamide 6.6 / Corespun

Recommended application Closing & decorative seams

Product benefits

- + Special thread that can meet the requirements of DIN EN ISO 20345 due to its linear resistance
- + Conductive seams, with low resistance for antistatic effect on protective shoes

	No./Tkt.	dtex	Needle	Make-up	Code
Antistatik 30/4	30	1000 (4)	NM 130 - 150	3,500 m	582093
				7,500 m	582255



Poly/Poly SF

for silicone-free seams

- Material / Construction** 100 % polyester, Corespun, silicon-free
- Recommended application** Closing seams
- Product benefits**
- + Excellent resistance to chemicals
 - + High moisture resistance
 - + Special thread for the filter industry

No./Tkt.	dtex	Needle	Make-up	Code
80	400(2)	NM 80 - 100 / 12 - 16	33,000 m	585263



Polypropylen SF

for acid and lye resistant seams

- Material / Construction** 100 % polypropylene / Continuous filament, silicon-free
- Recommended application** Closing seams
- Product benefits**
- + Excellent resistance to chemicals
 - + High moisture resistance
 - + Silicone-free special thread for the filter industry

No./Tkt.	dtex	Needle	Make-up	Code
40	750(2)	NM 90 - 110 / 14 - 18	4,000 m	711632
30	1050(3)	NM 110 - 130 / 18 - 21	2,500 m	585157



Polyacryl

for dry heat-resistant seams

- Material / Construction** 100 % polyacrylic / Spun thread
- Recommended application** Closing seams
- Product benefits**
- + Good dry heat resistance
 - + Good resistance to chemicals
 - + Special thread for the filter industry
 - + Good hydrolysis resistance

No./Tkt.	dtex	Needle	Make-up	Code
30	1000(3)	NM 110 - 130 / 18 - 21	3,000 m	748889
			6,000 m	777986



PTFE

for UV-resistant seams

Material / Construction	100% polytetrafluorethylene (PTFE) / Continuous filament
Recommended application	Closing seams
Product benefits	<ul style="list-style-type: none">+ Very high tear resistance+ Very good heat resistance, short-term up to 300°C, permanent up to 250°C+ Good resistance to chemicals+ Optimal UV resistance+ Very high rub resistance

No./Tkt.	dtex	Needle	Make-up	Code
30	1300(3)	NM 90 - 110 / 14 - 18	4,200 m	724831



WS

for water-soluble seams

Material / Construction	100 % polyvinyl alcohol (PVA) / Spun yarn, water-soluble
Recommended application	Basting or pre-tacking applications
Product benefits	<ul style="list-style-type: none">+ Can be used like a regular sewing thread without alteration of the machines+ Dissolves on contact with water+ No chemicals desired+ Breaking strength > 600 cN

No./Tkt.	dtex	Needle	Make-up	Code
120	250(2)	NM 70 - 80 / 10 - 12	5,000 m	715492

Complementary Products by A&E

Polyester Thread	25
Polyamide Thread	25
Cotton Thread	26
Polyester/Cotton Thread	26
Specials	26

100% Polyester Thread

Perma Spun®

100% polyester, Spun



No./Tkt.	dtex	Needle	Make-up	Code
120	270(2)	NM 70 - 80 / 10 - 12	5,000 m	705733
75	400(2)	NM 80 - 100 / 12 - 16	5,000 m	705732
50	600(2)	NM 90 - 110 / 14 - 18	5,000 m	705731
30	900(3)	NM 120 - 130 / 19 - 21	5,000 m	705730

Filan

100% polyester

Continuous filament



No./Tkt.	dtex	Needle	Make-up	Code
80	300(3)	NM 70 - 90 / 10 - 14	15,000 m	705632
			27,000 m	705630
60	500(3)	NM 90 - 100 / 14 - 16	10,000 m	705642
			20,000 m	705643
40	700(3)	NM 90 - 110 / 14 - 18	4,000 m	705620
			8,000 m	705622
30	900(3)	NM 110 - 130 / 18 - 21	3,000 m	705610
20	1350(3)	NM 120 - 140 / 19 - 22	600 m	705601
			2,000 m	705600

Wildcat Plus®

100% polyester

Textured multifilament



No./Tkt.	dtex	Needle	Make-up	Code
160	180(1)	NM 65 - 70 / 9 - 10	10,000 m	705752
80	350(2)	NM 70 - 90 / 10 - 14	5,000 m	705751
			10,000 m	705753
40	700(4)	NM 90 - 110 / 14 - 18	5,000 m	705750

100% Polyamide Thread

Anefil Nylon Bonded

100% polyamide 6.6

Continuous filament, outerbonded



No./Tkt.	dtex	Needle	Make-up	Code
60	450(2)	NM 90 - 100 / 14 - 16	4,500 m	709021
40	700(3)	NM 90 - 100 / 14 - 18	3,000 m	709022
20	1350(3)	NM 120 - 140 / 19 - 22	4,100 m	709028

Anelock

100% fusible polyamide

Multifilament

No./Tkt.	dtex	Needle	Make-up	Code
85	350	NM 70 - 80 / 10 - 12	3,000 m	709150

100% Cotton Thread

Anecot®

100% cotton, Spun

	No./Tkt.	dtex	Needle	Make-up	Code
Anecot® 50(3)	90	350(3)	NM 80 - 90 / 12 - 14	10,000 m	705994
Anecot® 50(2)	50	400(2)	NM 90 - 110 / 14 - 16	10,000 m	705993
Anecot® 30(3)	50	600(3)	NM 90 - 110 / 14 - 18	5,000 m	705992
Anecot® 24(3)	40	750(3)	NM 110 - 120 / 18 - 19	5,000 m	705991

Polyester/Cotton Thread

D-Core®

60% polyester /
40% cotton, Corespun



	No./Tkt.	dtex	Needle	Make-up	Code
	120	240(2)	NM 60 - 65 / 8 - 9	5,000 m	705845
	75	400(2)	NM 80 - 90 / 12 - 14	5,000 m	705844
	50	600(2)	NM 100 - 110 / 16 - 18	5,000 m	705843
	36	800(2)	NM 110 - 120 / 18 - 19	5,000 m	705842
	27	1050(2)	NM 130 - 140 / 21 - 22	5,000 m	705841

D-Core® RFD

60% polyester /
40% cotton, Corespun

	No./Tkt.	dtex	Needle	Make-up	Code
	75	400(2)	NM 90 - 110 / 14 - 18	5,000 m	705864
	50	600(2)	NM 100 - 110 / 16 - 18	5,000 m	705863
	36	800(2)	NM 110 - 120 / 18 - 19	3,000 m	705862

Specials

Cocoon Bobbins Perma Core

100% polyester, Core spun



	No./Tkt.	dtex	Needle	Make-up	Code
	120	240(2)	11	200 m	705569
	120	240(2)	10 W	185 m	705566
	75	400(2)	10 W	130 m	705565

Cocoon Bobbins Filan

100% polyester
Continuous filament



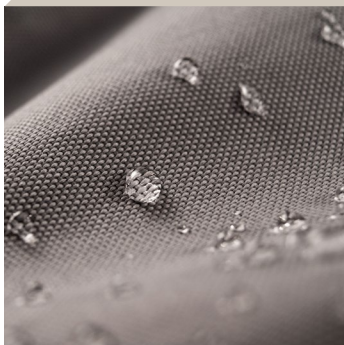
	No./Tkt.	dtex	Needle	Make-up	Code
	180	160(2)	10 W	290 m	705570
	120	240(3)	10 W	190 m	705571

+49 76 81 21-0

contact@guetermann.com

Follow us on LinkedIn

guetermann.com



seams
so perfect